

2011 KENCAN Demographics

Clinic Patients

	Kengetta	%	Mikinduri	%	Total	%
Medical	603	35%	554	27%	1157	31%
Dental	190	11%	525	25%	715	19%
Vision	896	53%	1021	49%	1917	51%
Total	1701	45%	2089	55%	3790	

Sex	Kengetta	%	Mikinduri	%	Total	%
M	583	34%	817	39%	1400	37%
F	1118	66%	1272	61%	2390	63%
Total	1701		2089		3790	

Age	Kengetta	%	Mikinduri	%	Total	%
0 - 5	57	3%	150	7%	207	5%
6-10	138	8%	186	9%	324	9%
11-15	254	15%	176	8%	430	11%
16-20	106	6%	136	7%	242	6%
21-40	360	21%	441	21%	801	21%
41-60	519	31%	657	31%	1176	31%
61-80	229	13%	319	15%	548	14%
81+	25	1%	17	1%	42	1%
Total	1701		2089		3790	

Multiple Clinic Patients

	Kengetta	%	Mikinduri	%	Total	%
2 Clinics	49	3%	21	1%	70	2%
3 Clinics	0	0%	0	0%	0	0%

Clinic Patients by Day

	Kengetta	Med	Den	Vis	Mikinduri	Med	Den	Vis	Total	Med	Den	Vis
Day: 14	106	34	11	51	0	0	0	0	106	34	11	51
Day: 15	411	107	69	236	0	0	0	0	411	107	69	236
Day: 16	488	166	43	272	0	0	0	0	488	166	43	272
Day: 17	696	296	67	337	205	139	62	0	901	435	129	337
Day: 18	0	0	0	0	261	78	91	96	261	78	91	96
Day: 21	0	0	0	0	436	86	107	248	436	86	107	248
Day: 22	0	0	0	0	430	70	113	247	430	70	113	247
Day: 23	0	0	0	0	500	102	135	269	500	102	135	269
Day: 24	0	0	0	0	257	79	17	161	257	79	17	161
Total	1701				2089				3790			

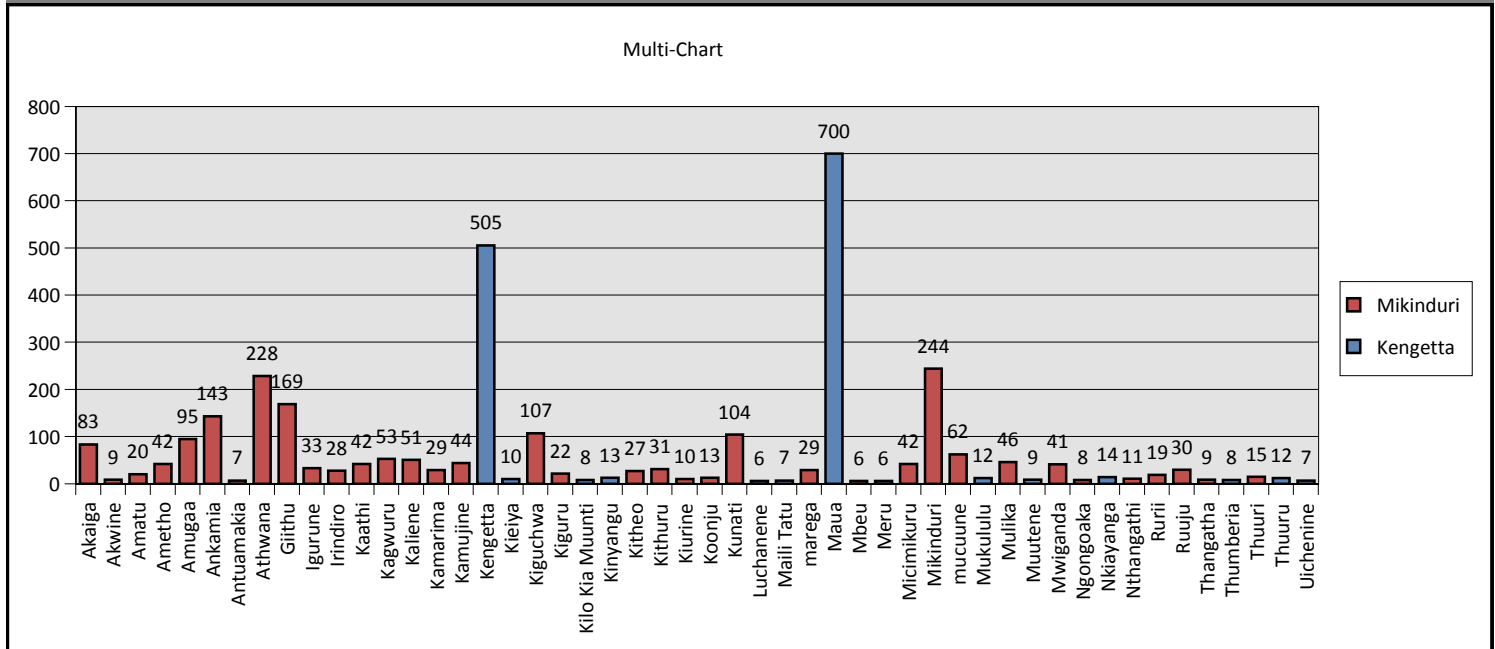
Growth Rate	Kengetta	%	Mikinduri	%	Total	%
0 - 03%	68	4%	35	2%	103	3%
04 - 15%	42	2%	32	2%	74	2%
16 - 50%	68	4%	30	1%	98	3%
51 - 85%	12	1%	13	1%	25	1%
86 - 97%	2	0%	3	0%	5	0%
98 - 100%	0	0%	0	0%	0	0%
Total	192		113		305	

Sponsored Children

Kengetta	Mikinduri	Total
39	0	39

Referrals	Kengetta	Mikinduri	Total
	95	172	267

2011 Town Demographics



Site	Town	Count
Kengetta	Maua	700
	Kengetta	505
	Nkiayanga	14
	Kinyangu	13
	Thuuru	12
	Mukululu	12
	Kieiya	10
	Muutene	9
	Thumberia	8
	Kilo Kia Muunti	8
	Uichenine	7
	Maili Tatu	7
	Meru	6
	Luchanene	6
Mikinduri	Mikinduri	244
	Athwana	228
	Giithu	169
	Ankamia	143
	Kiguchwa	107
	Kunati	104

Site	Town	Count
	Amugaa	95
	Akaiga	83
	mucuune	62
	Kagwuru	53
	Kaliene	51
	Mulika	46
	Kamujine	44
	Ametho	42
	Micimikuru	42
	Kaathi	42
	Mwiganda	41
	Igurune	33
	Kithuru	31
	Ruuju	30
	Kamarima	29
	marega	29
	Irindiro	28
	Kitheo	27
	Kiguru	22
	Amatu	20
	Rurii	19
	Thuuri	15
	Koonju	13
	Nthangathi	11
	Kiurine	10
	Akwine	9
	Thangatha	9
	Ngongoaka	8
	Antuamakia	7
	Mbeu	6

2011 Medical Demographics

Medical Clinic Patients

Kengetta	Mikinduri	Total
603	554	1157

Sex	Kengetta	%	Mikinduri	%	Total	%
M	222	37%	210	38%	432	37%
F	381	63%	344	62%	725	63%
Total	603		554		1157	

Age	Kengetta	%	Mikinduri	%	Total	%
0 - 5	45	7%	96	17%	141	12%
6-10	63	10%	47	8%	110	10%
11-15	102	17%	39	7%	141	12%
16-20	25	4%	37	7%	62	5%
21-40	125	21%	112	20%	237	20%
41-60	156	26%	136	25%	292	25%
61-80	68	11%	78	14%	146	13%
81+	11	2%	5	1%	16	1%
Total	603		554		1157	

Clinic Patients by Day

	Kengetta	Mikinduri	Total
Day: 14	34	0	34
Day: 15	107	0	107
Day: 16	166	0	166
Day: 17	296	139	435
Day: 18	0	78	78
Day: 21	0	86	86
Day: 22	0	70	70
Day: 23	0	102	102
Day: 24	0	79	79
Total	603	554	1157

Growth Rate	Kengetta	%	Mikinduri	%	Total	%
0 - 03%	39	6%	33	6%	72	6%
04 - 15%	23	4%	30	5%	53	5%
16 - 50%	20	3%	30	5%	50	4%
51 - 85%	6	1%	13	2%	19	2%
86 - 97%	1	0%	3	1%	4	0%
98 - 100%	0	0%	0	0%	0	0%
Total	89		109		198	

Sponsored Children

Kengetta	Mikinduri	Total
30	0	30

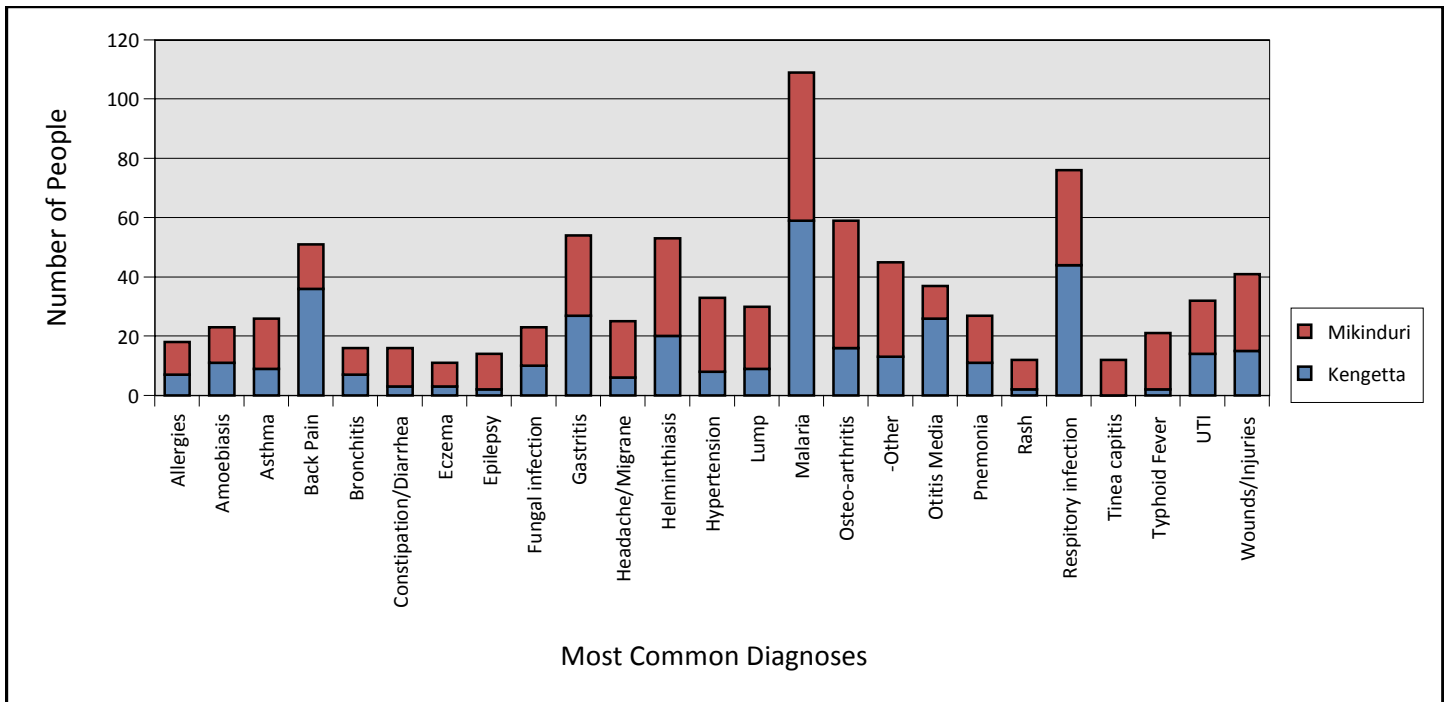
Referrals	Kengetta	Mikinduri	Total
	65	94	159

2011 Medical Statistics

Number of Diagnoses per Patient

	Kengetta	Mikinduri	Total
1	546	440	986
2	53	94	147
3	3	17	20
4	0	3	3
5	1	0	1
Total	603	554	1157

2011 Medical Statistics



Number of Patients per Diagnosis

	Kengetta	Mikinduri	Total
Abdomen pain	4	7	11
Allergies	7	11	18
Amoebiasis	11	12	23
Arthritis	4	5	9
Asthma	9	17	26
Back Pain	36	15	51
Bronchitis	7	9	16
Brucellosis	0	4	4
Cancer	1	2	3
Candidiasis	5	6	11
Cellulitis/Wound Infectio	4	5	9
Chest pain	1	2	3
Conjunctivitis	32	3	35
Constipation/Diarrhea	3	13	16
Cramps	2	2	4
Cramps/PMS	1	0	1
Dehydration	0	1	1
Diabetes	3	1	4
Ear Problem	14	3	17
Eczema	3	8	11
Epilepsy	2	12	14
Eye Problem	12	2	14

Number of Patients per Diagnosis

	Kengetta	Mikinduri	Total
Flu	0	7	7
Fungal infection	10	13	23
Gastritis	27	27	54
Giardiasis	3	7	10
Headache/Migrane	6	19	25
Helminthiasis	20	33	53
Hernia	1	3	4
Hypertension	8	25	33
Infertility/Impotency	0	3	3
Lump	9	21	30
Lump/Growth	0	1	1
Malaria	59	50	109
Malnutrition	2	5	7
Myalgia	3	3	6
-None	191	101	292
Osteo-arthritis	16	43	59
-Other	13	32	45
Otitis Media	26	11	37
Pneumonia	11	16	27
PUD	3	4	7
Rash	2	10	12
Respiratory infection	44	32	76
Scabies	8	0	8
Sexually Transmitted Infe	1	0	1
TB	1	2	3
Thyroid Disease	1	3	4
Tinea capitis	0	12	12
Tonsillitis	6	3	9
Typhoid Fever	2	19	21
Ulcer	3	2	5
UTI	14	18	32
Wounds/Injuries	15	26	41
Total	666	691	1357

2011 Medical Statistics

Less Common Diagnoses

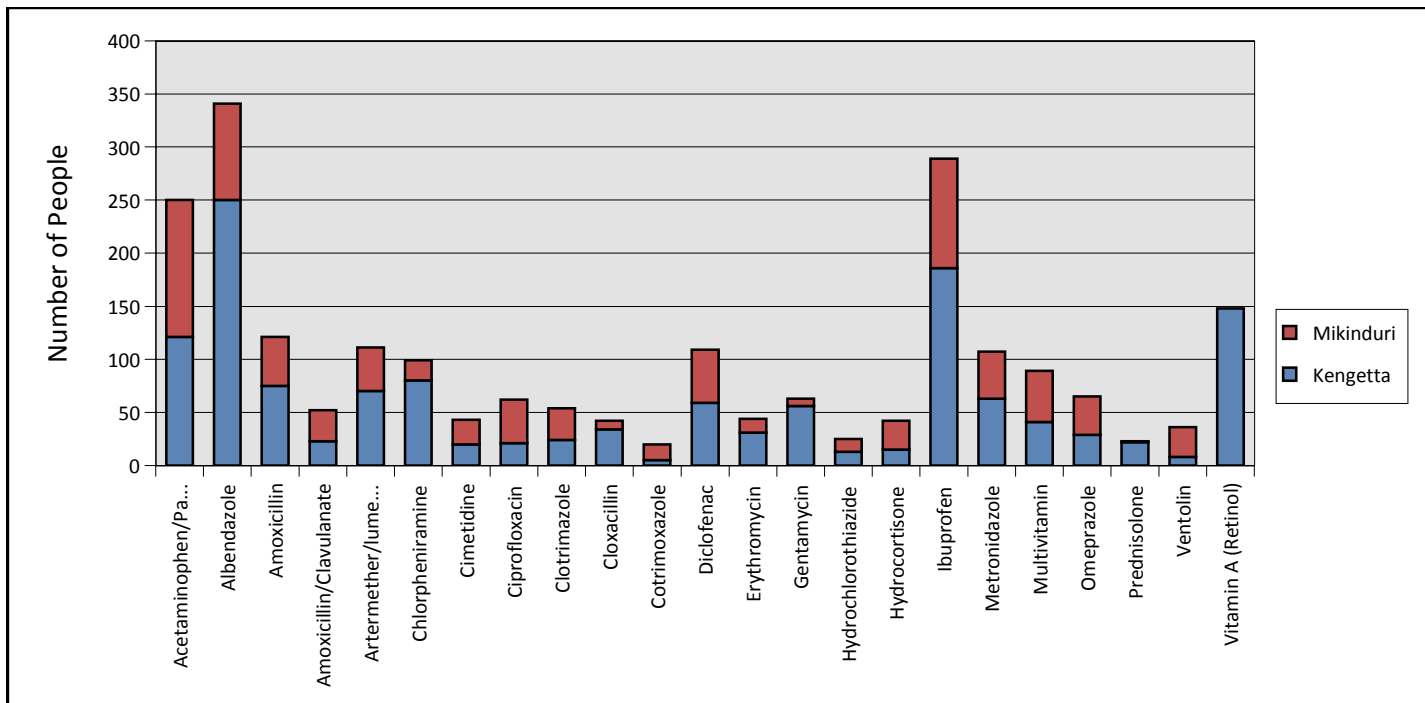
Number of Patients	Kengetta	Mikinduri	Total
Advanced CA cervia	0	1	1
Alcoholic Addition	1	0	1
Anemia	1	0	1
Bursitis	0	1	1
Carpal tunnel	0	2	2
Chloasoma	0	1	1
COPD	1	0	1
CSOM	1	0	1
Dysphagia	0	1	1
Ganglion	0	2	2
Gen Vulgus	1	0	1
GERD	0	2	2
Hemorrhoids	0	2	2
Holluscum Contagiosam	1	0	1
Hydrocele	2	0	2
Hypersensetivity Reaction	2	0	2
Hypertrophy	0	2	2
Hysteria	0	2	2
Impetigo	0	1	1
Jaundice	0	1	1
Menopause	0	5	5
Miscarraige	0	2	2
Mumps	0	2	2
Muscular contagiosum	0	2	2
Muscular dystrophy	0	1	1
muscular skelatal pain	0	2	2
Paratitis	0	1	1
Peripherral Neuropathy	0	1	1
Phetophobia	2	0	2
Pregnancy	0	1	1
Sacroilitis	0	1	1
Secondary Enuresis	0	1	1
STTE	1	0	1
Tendinitis	0	2	2
tongue tied	0	1	1
Vericose veins	2	0	2
Vertigo	0	1	1
Vitelligo	0	1	1
Total	15	42	57

2011 Medical Statistics

Number of Prescriptions per Patient

	Kengetta	Mikinduri	Total
0	34	110	144
1	94	152	246
2	181	131	312
3	172	109	281
4	81	38	119
5	35	11	46
6	6	3	9
Total	603	554	1157

2011 Medical Statistics



Prescription	Kengetta	Mikinduri	Total
Acetaminophen/Paracet	34	110	144
Albendazole	121	129	250
Aluminum / Magnesium	11	6	17
Amoxicillin	75	46	121
Amoxicillin/Clavulanate	23	29	52
Artemether/lumef (Coart	70	41	111
Artesunate/Amodioquine	3	13	16
Atenolol	6	11	17
Benzyl Benzoate	7	1	8
Calcium	2	0	2
Cetirizine	1	3	4
Chlorhexidine	0	3	3
Chlorpheniramine	80	19	99
Cimetidine	20	23	43
Ciprofloxacin	21	41	62
Clindamycin	1	0	1
Clotrimazole	24	30	54
Cloxacillin	34	8	42
Cotrimoxazole	5	15	20
Dexamethasone drops	11	0	11
Diaclox	0	1	1
Diazipan	0	3	3
Diclofenac	59	50	109

Prescription	Kengetta	Mikinduri	Total
Dobesil	2	0	2
Doxycycline	7	6	13
Earklin	10	0	10
Enalapril	1	0	1
Erythromycin	31	13	44
Ferrous / Folic acid	0	1	1
Flamocest	1	0	1
Fluconazole	1	0	1
Furosemide	4	2	6
Gentamycin	56	7	63
Grabacin	0	7	7
Griseofulvin	14	6	20
Hydrochlorothiazide	13	12	25
Hydrocortisone	15	27	42
Ibuprofen	186	103	289
Mebendazole	0	1	1
Meloxica	0	4	4
Metronidazole	63	44	107
Multivitamin	41	48	89
Neurobiun	0	1	1
Nifedipine	0	4	4
Nystatin	3	2	5
Omeprazole	29	36	65
Ototrex	1	0	1
Phenobarbitol	2	9	11
Prednisolone	22	1	23
Quinine	0	3	3
Revital	0	1	1
Salbutamol	7	11	18
Silver Sulfadiazine	0	1	1
Systan	1	0	1
Tegretol	0	1	1
Tetracycline	9	0	9
Tofen	1	0	1
Ventolin	8	28	36
Vitamin A (Retinol)	148	0	148
Vitamin B	0	5	5
Wax Out	5	0	5
Whitfield's	0	14	14
Xtraderm	1	0	1
Zinc Sulfate	1	5	6
Total	1541	1076	2617

2011 Dental Demographics

Dental Clinic Patients

	Kengetta	Mikinduri	Total
Dental	190	525	715

Sex	Kengetta	%	Mikinduri	%	Total	%
M	39	21%	177	34%	216	30%
F	151	79%	348	66%	499	70%
Total	190		525		715	

Age	Kengetta	%	Mikinduri	%	Total	%
0 - 5	3	2%	14	3%	17	2%
6-10	20	11%	95	18%	115	16%
11-15	19	10%	82	16%	101	14%
16-20	23	12%	50	10%	73	10%
21-40	58	31%	135	26%	193	27%
41-60	49	26%	100	19%	149	21%
61-80	13	7%	47	9%	60	8%
81+	1	1%	2	0%	3	0%
Total	190		525		715	

Sponsored Children

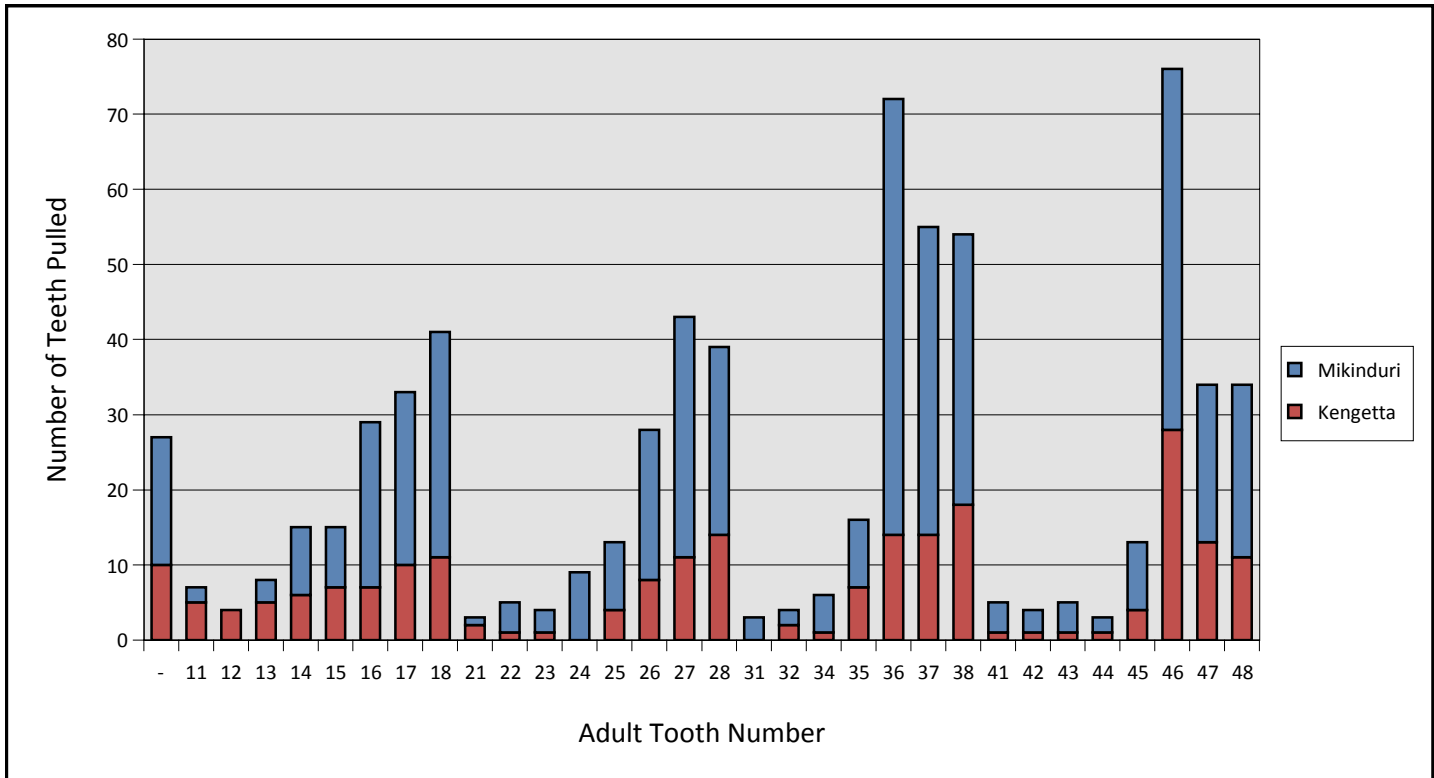
Kengetta	Mikinduri	Total
1	0	1

Referrals	Kengetta	Mikinduri	Total
	4	11	15

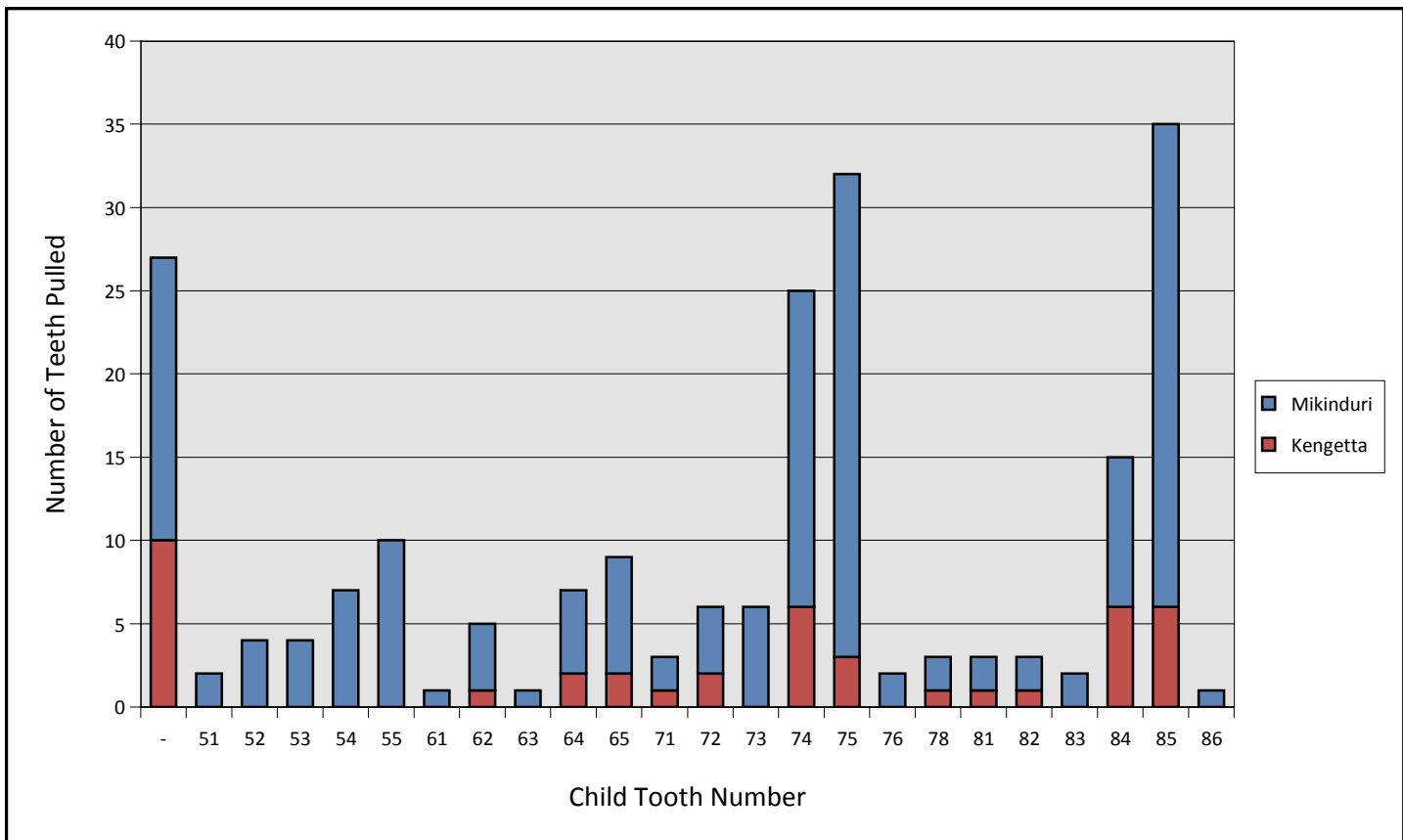
Number of Dental Patients by Day

	Kengetta	Mikinduri	Total
Day: 14	11	0	11
Day: 15	69	0	69
Day: 16	43	0	43
Day: 17	67	62	129
Day: 18	0	91	91
Day: 21	0	107	107
Day: 22	0	113	113
Day: 23	0	135	135
Day: 24	0	17	17
Total	190	525	715

Adult Extractions



Child Extractions



Number of Prescriptions per Patient

	Kengetta		Mikinduri		Total	
	Count	%	Count	%	Count	%
0	162	58%	261	30%	423	36%
1	66	24%	133	15%	199	17%
2	52	19%	490	55%	542	47%
Total	280		884		1164	

Number of Dental Prescriptions

	Kengetta		Mikinduri		Total	
	Count	%	Count	%	Count	%
Antibiotics	47	40%	265	43%	312	42%
Pain Control	71	60%	358	57%	429	58%
Other	0	0%	0	0%	0	0%
Total	118		623		741	

Number of Teeth Extracted per Patient

	Kengetta		Mikinduri		Total	
	Count	%	Count	%	Count	%
0	0	0%	0	0%	0	0%
1	148	53%	558	63%	706	61%
2	84	30%	256	29%	340	29%
3	18	6%	66	7%	84	7%
4	4	1%	4	0%	8	1%
>4	26	9%	0	0%	26	2%
Total	280		884		1164	

Permanent teeth															
upper right								upper left							
18	17	16	15	14	13	12	11	21	22	23	24	25	26	27	28
48	47	46	45	44	43	42	41	31	32	33	34	35	36	37	38
lower right								lower left							
Deciduous teeth (baby teeth)															
upper right								upper left							
			55	54	53	52	51	61	62	63	64	65			
			85	84	83	82	81	71	72	73	74	75			
lower right								lower left							

Tooth Number Extracted

	Kengetta	Mikinduri	Total
Tooth -	10	17	27
Tooth 11	6	2	8
Tooth 12	5	0	5
Tooth 13	6	5	11
Tooth 14	7	12	19
Tooth 15	9	13	22
Tooth 16	7	29	36
Tooth 17	11	33	44
Tooth 18	15	40	55
Tooth 21	2	1	3
Tooth 22	1	6	7
Tooth 23	1	5	6
Tooth 24	0	14	14
Tooth 25	4	15	19
Tooth 26	8	32	40
Tooth 27	12	42	54
Tooth 28	15	32	47
Tooth 31	0	4	4
Tooth 32	2	2	4
Tooth 34	1	6	7
Tooth 35	7	10	17
Tooth 36	14	79	93

Tooth Number Extracted

	Kengetta	Mikinduri	Total
Tooth 37	15	63	78
Tooth 38	23	59	82
Tooth 41	1	7	8
Tooth 42	1	5	6
Tooth 43	1	6	7
Tooth 44	1	2	3
Tooth 45	5	11	16
Tooth 46	28	77	105
Tooth 47	15	33	48
Tooth 48	14	36	50
Tooth 51	0	2	2
Tooth 52	0	4	4
Tooth 53	0	4	4
Tooth 54	0	8	8
Tooth 55	0	10	10
Tooth 61	0	1	1
Tooth 62	1	4	5
Tooth 63	0	2	2
Tooth 64	2	5	7
Tooth 65	2	9	11
Tooth 71	1	2	3
Tooth 72	2	6	8
Tooth 73	0	9	9
Tooth 74	7	27	34
Tooth 75	3	32	35
Tooth 76	0	4	4
Tooth 78	1	3	4
Tooth 81	1	2	3
Tooth 82	1	2	3
Tooth 83	0	3	3
Tooth 84	6	12	18
Tooth 85	6	33	39
Tooth 86	0	2	2
Total	280	884	1164

2011 Vision Demographics

Vision Clinic Patients

Kengetta	Mikinduri	Total
896	1021	1917

Sex	Kengetta	%	Mikinduri	%	Total	%
M	315	35%	435	43%	750	39%
F	581	65%	586	57%	1167	61%
Total	896		1021		1917	

Age	Kengetta	%	Mikinduri	%	Total	%
0 - 5	9	1%	39	4%	48	3%
6-10	48	5%	46	5%	94	5%
11-15	120	13%	55	5%	175	9%
16-20	61	7%	48	5%	109	6%
21-40	180	20%	196	19%	376	20%
41-60	319	36%	428	42%	747	39%
61-80	143	16%	198	19%	341	18%
81+	14	2%	10	1%	24	1%
Total	896		1021		1917	

Sponsored Children

Kengetta	Mikinduri	Total
10	0	10

Referrals	Kengetta	Mikinduri	Total
	34	68	102

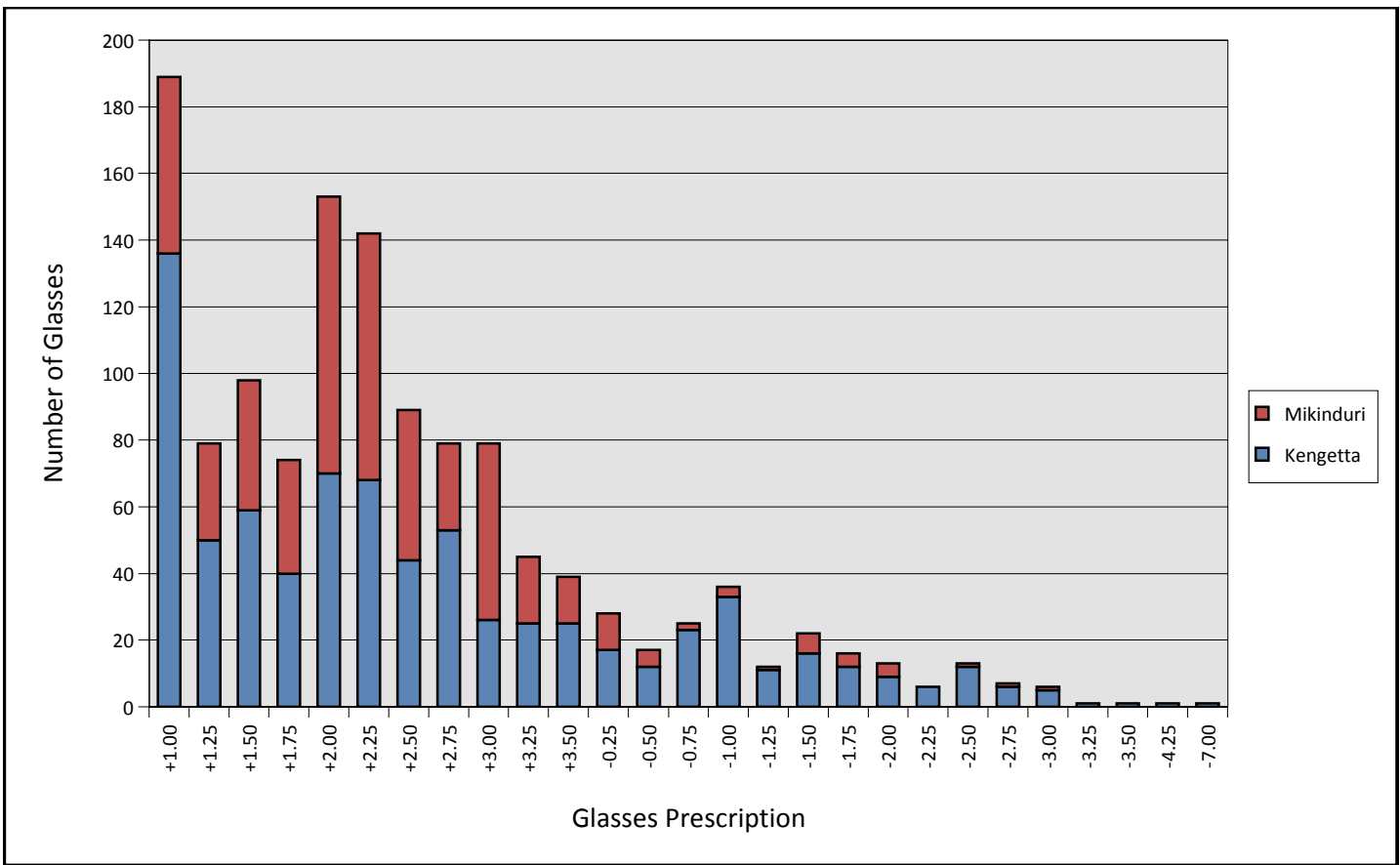
Clinic Patients by Day

	Kengetta	Mikinduri	Total
Day: 14	51	0	51
Day: 15	236	0	236
Day: 16	272	0	272
Day: 17	337	0	337
Day: 18	0	96	96
Day: 21	0	248	248
Day: 22	0	247	247
Day: 23	0	269	269
Day: 24	0	161	161
Total	896	1021	1917

2011 Vision Prescriptions

Vision Patients Prescriptions

	Kengetta	Mikinduri	Total	
-	3	2	5	
+1.00	136	53	189	
+1.25	50	29	79	
+1.50	59	39	98	
+1.75	40	34	74	
+2.00	70	83	153	
+2.25	68	74	142	
+2.50	44	45	89	
+2.75	53	26	79	
+3.00	26	53	79	
+3.25	25	20	45	
+3.50	25	14	39	
-0.25	17	11	28	
-0.50	12	5	17	
-0.75	23	2	25	
-1.00	33	3	36	
-1.25	11	1	12	
-1.50	16	6	22	
-1.75	12	4	16	
-2.00	9	4	13	
-2.25	6	0	6	
-2.50	12	1	13	
-2.75	6	1	7	
-3.00	5	1	6	
-3.25	1	0	1	
-3.50	1	0	1	
-4.25	1	0	1	
-7.00	1	0	1	
hat	201	101	302	
optomitrist	202	765	967	
Total Pairs of Glasses	762	509	1271	Hat implies no glasses were given
Total Items Distributed	1168	1377	2545	



2011 Vision Statistics

Number of People with Multiple Prescriptions

	Kengetta	Mikinduri	Total
1	643	675	1318
2	234	336	570
3	19	10	29
Total	896	1021	1917